

## MARY TEMPLE

### EDUCATION

- 1998 Skowhegan School of Painting and Sculpture, Skowhegan, Maine
- 1995 MFA, Painting and Drawing, Arizona State University, Tempe, Arizona
- 1989 BFA, Painting, Arizona State University, Tempe, Arizona

### SOLO EXHIBITIONS & PROJECTS

- 2011 *Northwest Corner, Southeast Light*, Rice University, Houston, Texas  
*Mary Temple*, Saint Gaudens Memorial Exhibition, Picture Gallery, Cornish, NH
- 2010 *Among Friends and Enemies*, Mixed Greens, New York City  
*Morning Light, West Wall*, permanent MTA, Q Line, Neck Road Station, New York City  
*Northeast Light, West Wall*, permanent installation, MS114, New York City
- 2009 *First Week*, Museum of Arts and Design, New York City  
*Currency*, Brooklyn Museum, Brooklyn, New York City
- 2008 *Mary Temple*, Real Art Ways, Hartford, Connecticut
- 2007 *Mary Temple*, Sandroni Rey, Los Angeles  
*Describing Light: Mary Temple Works on Paper*, Trois Gallery, Savannah College of Art and Design, Atlanta
- 2006 *The Forest for the Sea*, Smack Mellon, Brooklyn  
*Recalesce*, Mixed Greens, New York City  
*Extended Afternoon, Phase 2 & 3*, Aldrich Museum, Ridgefield, Connecticut  
*Continuum*, Martin Museum of Art, Baylor University, Waco, Texas
- 2005 *Extended Afternoon, Phase 1*, Aldrich Museum, Ridgefield, Connecticut
- 2004 *Postcard Skies*, Mixed Greens, New York City  
*Drawing Room*, Arts Club of Washington, D.C.
- 2003 *For the Millionth Time*, Mixed Greens, New York City  
*1,000,000 Ellipsoids*, ZieherSmith, New York City  
*Additament*, cherrydelosreyes, Los Angeles

### SELECTED GROUP EXHIBITIONS

- 2011 *Drawn from Photography*, The Drawing Center, New York City  
*Let Us Make Cake*, video projection on New Museum façade, New York City  
*The Days of This Society are Numbered*, (Mural Newspaper Collaborative) Abrons Art Center at Henry Street Settlement, New York City  
*Wall Works*, The DeCordova Museum, Lincoln, Massachusetts  
*The Bank and Trust Show*, The Art Exchange, White Plains, New York  
*Perception/Deception: Illusion in Contemporary Art*, Delaware Art Museum
- 2010 *Florist*, SHOWstudio, London  
*Day To-day*, Martos Gallery, New York City, curated by Anne Couillaud-Masseron  
*Smoke and Mirrors, Shadows and Fog*, Hunter College/Time Square Gallery, New York City  
*Look Again*, Southeastern Center of Contemporary Art, Winston-Salem, North Carolina  
*Beam, Board, Breath*, Sun Valley Art Center, Sun Valley, Idaho  
*False Documents and Other Illusions*, Portland Museum of Art, Portland Maine  
*Eye Spy, Playing With Perception*, Peabody Essex Museum, Salem, MA
- 2009 *Contemporary Forms of Trompe l'oeil*, Nitra Gallery, Nitra Slovakia  
*Yes or No and/or Yes and No*, Western Bridge, Seattle, WA  
*Linear Abstraction*, McKenzie Fine Art, New NYC
- 2008 *New Work: Mary Temple*, Alyson Shotz, Zilvinas Kempinas, SFMoMA, CA  
*Badlands*, MASS MoCA, North Adams, MA  
*Second\_Nature*, travels to Luxembourg and Chamarande, France  
*Inner and Outer Space*, The Mattress Factory, Pittsburg, PA  
*Light Seeking Light*, Western Bridge, Seattle, WA

## Mary Temple

2010 Saint-Gaudens Fellow

### *Outside (Light), In*



July 9 – August 28, 2011

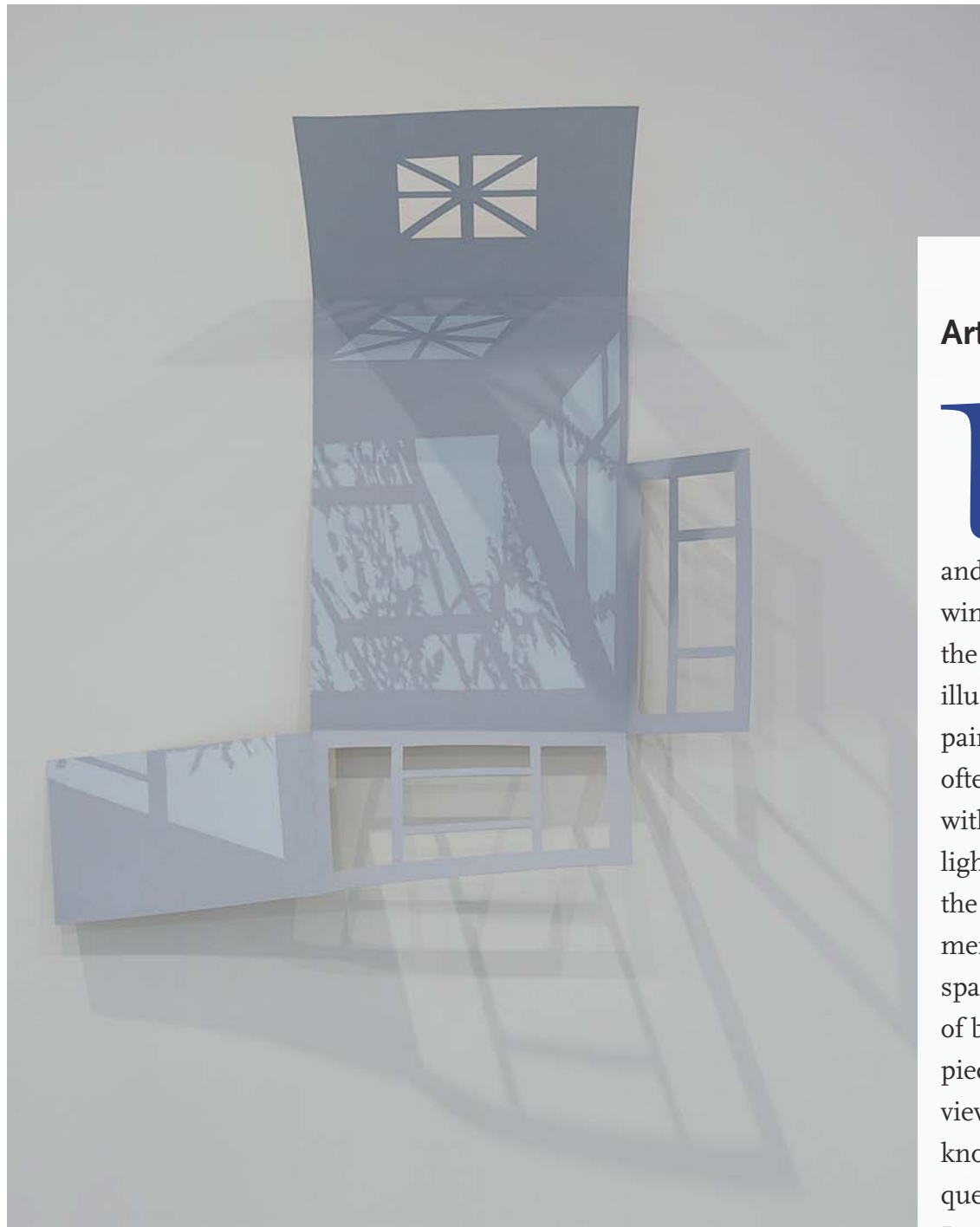
*Saint-Gaudens Memorial Exhibitions at the Picture Gallery  
Saint-Gaudens National Historic Site, Cornish, New Hampshire*

This exhibition is sponsored through the generosity of the Saint-Gaudens Memorial. The Saint-Gaudens Memorial is a private, non-profit organization chartered by the State of New Hampshire in 1919, to preserve and exhibit Saint-Gaudens's home and studios and to preserve his work there. The Memorial operated the site as a museum until 1965, when they donated the property to the National Park Service to become the Saint-Gaudens National Historic Site. The Memorial continues to play an important role as a park partner and supports the Site in a variety of ways including sponsoring programs and activities such as this exhibition, the summer concert series, and other events that increase public awareness of Augustus Saint-Gaudens and his works, and that promote sculpture and the arts in general.

The Fellowship of the Saint-Gaudens Memorial was established in 1977 to assist artists of promise. A Fellow is selected annually by the Saint-Gaudens Memorial, from a pool of candidates put forward by the Fellowship Committee and advisors, and is awarded to artists who have completed a body of work that demonstrates exceptional talent, and who may benefit from the recognition and financial grant that accompany the Fellowship. The year following the Fellowship, the artist submits works for installation, as part of the Saint-Gaudens Memorial exhibition series at the Picture Gallery.

To find out more or to help us by becoming a friend of Saint-Gaudens please contact us at (914) 944-1608 or email us at SGMemorial@aol.com or visit us on the web at www.sgnhs.org.

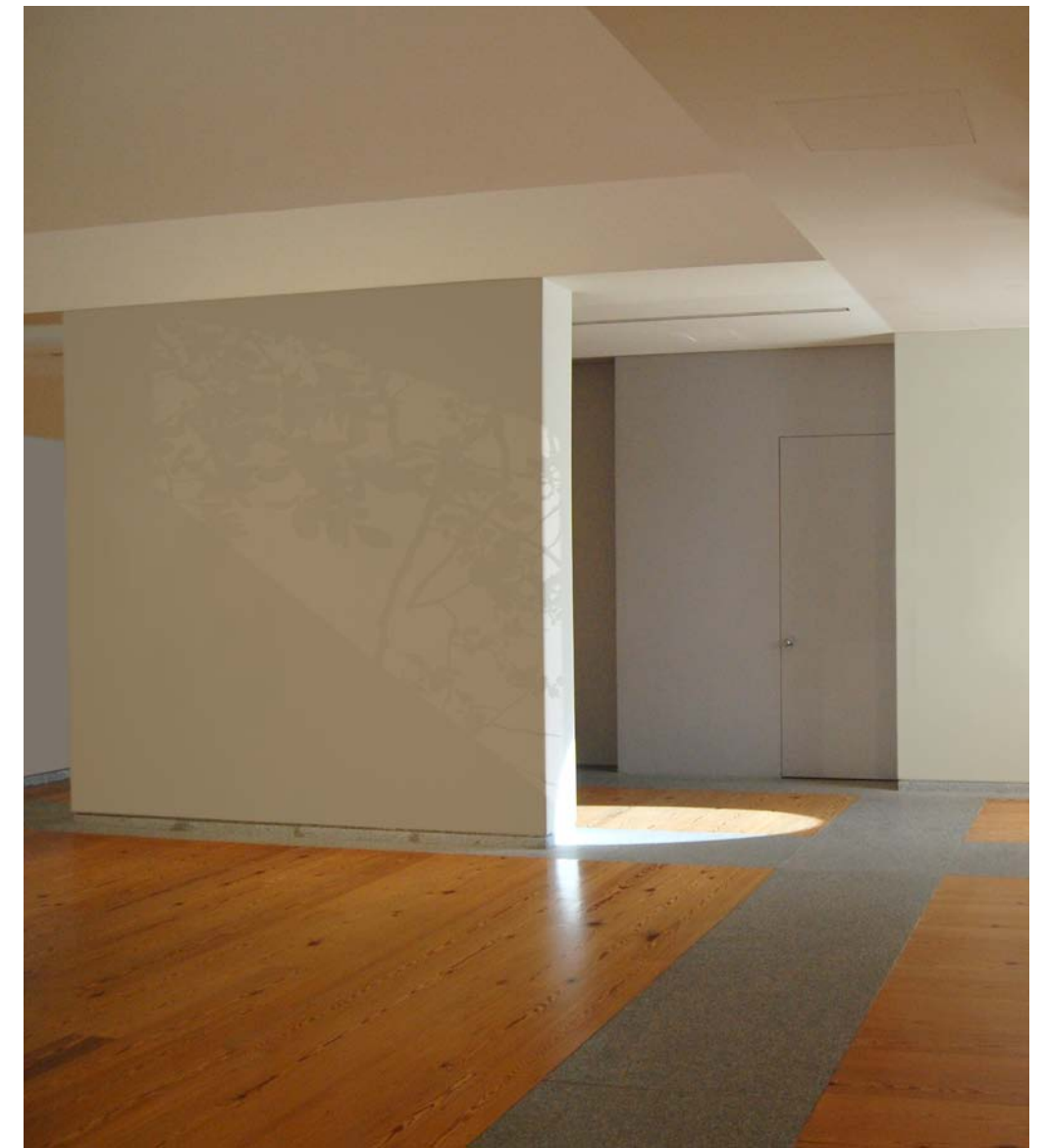
*Atrium Light*, from the series *Light Installations* (2002-present)  
hardwood, stain, urethane and acrylic paint on existing wall, 2006, 10" x 12' x 9'



### Artist's Statement:

**L** In the site-specific series *Light Installations*, (2002-Present), light and shadow from nearby windows seem to be raking the walls of the gallery. The illusion, however, is a hand-painted trompe l'oeil shard, often situated in rooms with little or no natural light. In this work I rely on the viewers knowledge and memory of light intersecting space to raise questions of belief and doubt. These pieces are meant to give the viewer time to enjoy not knowing, and to privilege questions over answers. By puzzling the physical senses, that is, setting up the viewer to fail at identifying something as elemental as light, these paintings celebrate the pleasure of trying to understand those things just outside the grasp of physical intelligence.

— *Mary Temple*



ary Temple, born in Arizona, now lives and works in Brooklyn, New York. Recent solo project venues include the Museum of Arts and Design, New York City the Brooklyn Museum, Brooklyn, New York; and The Aldrich Contemporary Art Museum, Ridgefield, CT. Group show venues include the San Francisco Museum of Modern Art; Western Bridge, Seattle, Washington; Massachusetts Museum of Contemporary Art, North Adams; the Sculpture Center, Long Island City, New York; The Mattress Factory Art Museum, Pittsburg, Pennsylvania; The Jewish Museum, New York City; and the Portland Museum of Art, Maine, among many others. Temple is the recipient of the 2010 Saint-Gaudens Memorial Fellowship, the 2010 Basil Alkazzi Award for Excellence in Painting, and a 2010 Fellow in Painting from NYFA. Temple is currently exhibiting in a solo exhibition at the Rice University Art Gallery in Houston, Texas, and group exhibitions at the Drawing Center, New York City; the Delaware Art Museum, Wilmington; and the deCordova Sculpture Park and Museum, Lincoln, Massachusetts. She has just completed a large public commission for a New York City school and a New York City subway station. In 2012, she will complete a public commission for the lobby of the Mickey Leland Federal Building, in Houston, Texas.